



Messaging Server



Email, Collaboration, Instant Messaging, and More - Trusted by SMBs Worldwide

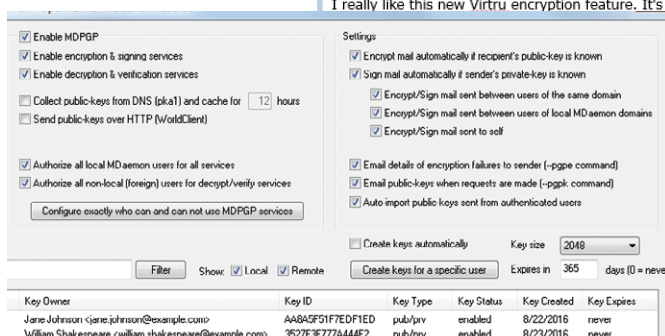
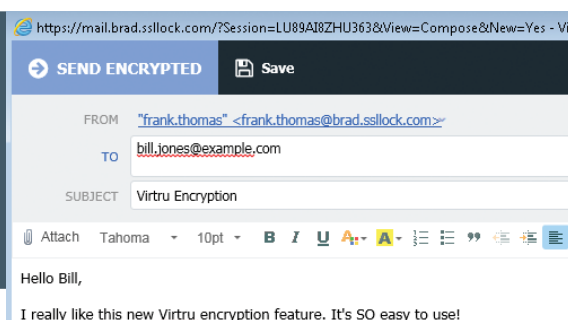
Key Features

- Virtual, hosted, or on-premise.
- Intuitive Mobile Device Management console to easily manage mobile devices. View, set and change the most used SMB IT mobile device policies (lock, remote wipe, etc.).
- Versatile web-based email (WorldClient) delivers full collaboration, including document sharing and a closed Instant Messaging client.
- Detect and disable hijacked email accounts.
- Calendar synchronization via CalDAV
- Supports Ticketing System using public folder access and any email client.
- Flexible design using IMAP, POP, ActiveSync, SMTP, DomainPOP, and MultiPOP services. Does not require a Server Operating System.
- Better email security and deliverability using DMARC, DKIM, SPF, spam filtering & Bayesian learning, SSL/TLS, backscatter protection, and an additional proactive malware prevention layer (via the SecurityPlus plug-in).
- Custom delivery schedules and mail queues for more flexible outbound mail management.
- Outlook enabled for email, calendar, contacts, tasks, and notes (via the Outlook Connector plug-in).
- Integrated Microsoft Exchange® migration tool.
- ActiveSync Migration Client
- ...and much more!

The MDAemon Messaging Server has been deployed in over 90 countries around the world to meet the needs of small-to-medium businesses that require a reliable and secure mail server without expensive administration or high per-user costs. The Windows-based mail server requires almost no maintenance and offers the flexibility of remote administration to make management simple.

Client-Side and Server-Side Encryption

End-to-end client-side email and attachment encryption with Virtru allows users to send encrypted messages directly from their mail client.



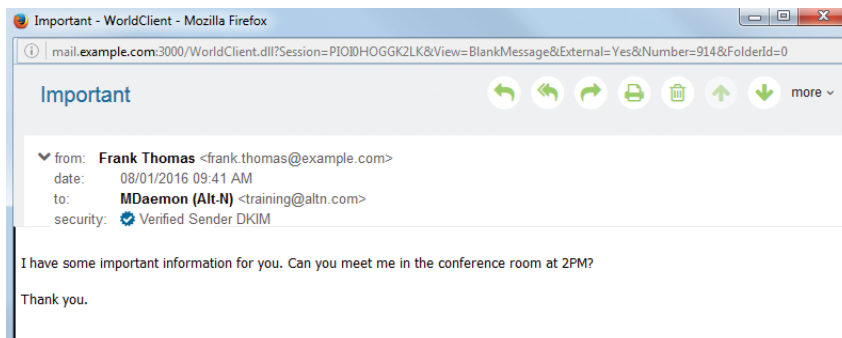
MDaemon uses OpenPGP to encrypt messages as they pass through the server. Content filter rules can be added to ensure that messages containing sensitive information are encrypted by MDAemon before they are delivered.

Key Benefits

- **Highly Secure**
Incorporates multiple layers of security techniques such as Relay Controls, IP Shielding, SMTP Authentication, and reverse lookups, to minimize possible server exploits. Also includes email encryption.
- **Full Collaboration**
Mail, calendar, contacts, tasks, documents and notes. Includes instant messaging and document sharing.
- **Easy Administration and Maintenance**
Intuitive, task-based interface, easy account database integration (via Active Directory, LDAP, ODBC, or MDAemon's Minger verification), plus simple backup and restore.
- **Remote Access**
Access email from almost anywhere using integrated web-based email or perform remote server management from the web-based remote administration application.
- **Powerful Mail List Engine**
Easily create and manage bulletins, discussions, and distribution lists to effectively communicate on multiple levels.

System Requirements

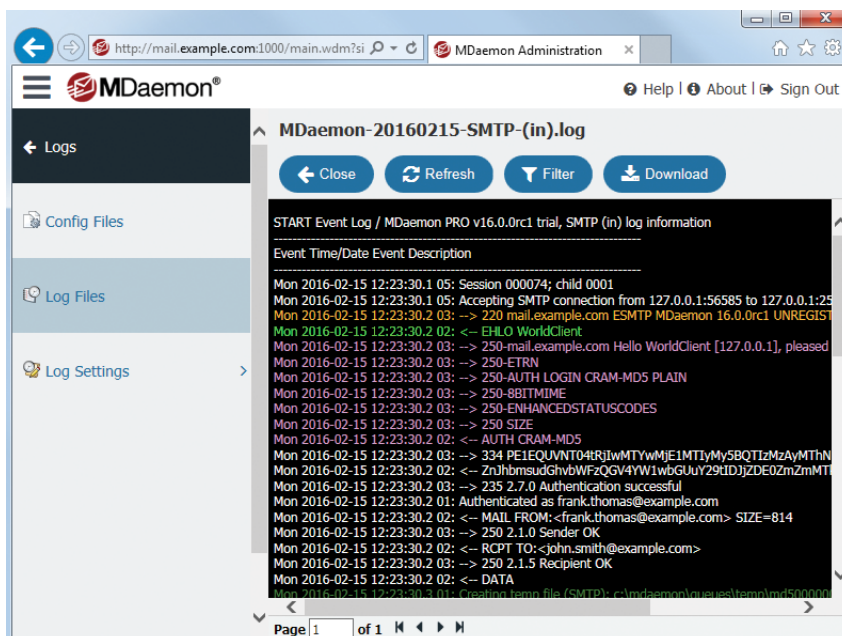
- Microsoft Windows 10|2016|8|2012|7|2008|Vista|2003 - Service Pack 2 & KB2868626|XP - Service Pack 3 (including 64-bit versions)
- CPU 800 MHz processor or higher (dual core CPU 2.4 GHz or higher recommended)
- 512 MB of RAM (1 GB recommended)
- Typical Hard disk space required: 200MB, plus additional space for stored mail
- TCP/IP network protocol installed
- Internet or Intranet communication capabilities



WorldClient, MDAemon's web-based email client, allows users to easily access and share email, calendars, contacts, tasks, documents and notes. To help users identify legitimate email or encryption, a security icon is displayed in the email header.



CalDAV and CardDAV allow users to view and update all calendars and contact lists to which they have been given access on all compatible CalDAV and CardDAV clients.



Web-based Remote Administration showing mail routing information displayed in Colorized Session Logs. This allows protocol commands and errors to stand out for easier review and troubleshooting.